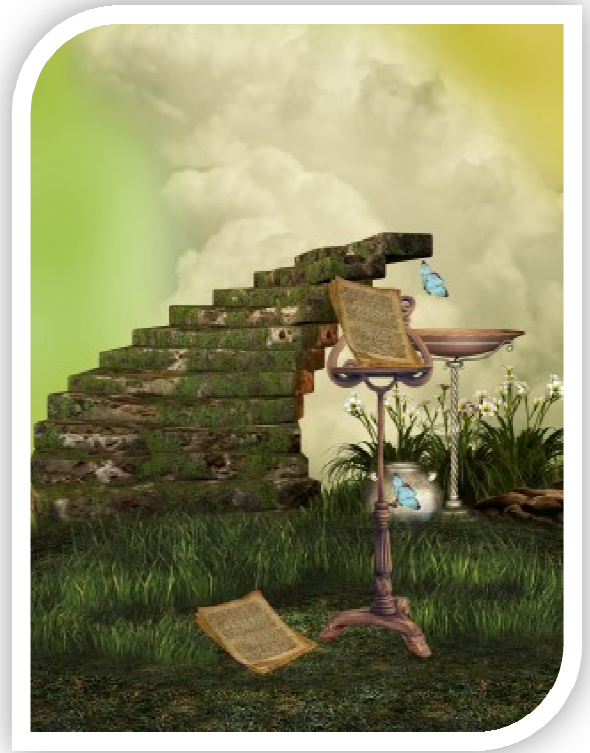


Growing Your Expansion Ministry... One S.T.E.P. at a Time!

With Mendhi Audlin, LUT

PO Box 2288, Evergreen, CO 80437
817-296-5817 | mendhi@spiritgroups.org
www.MendhiAudlin.com | www.SpiritGroups.org

Notes:



Lesson from Saddleback Church:

Begin with a _____.

Be a church _____, not a church _____.

Lesson from Gateway Church:

Fulfilling the mission:

- 1) Deliver the most _____ you've ever heard.
- 2) Provide the most _____ worship experience in which you've ever participated.
- 3) Offer the best _____ your kids have ever experienced.

Lessons from LifeChurch.TV:

- 1) Reject the label of _____. Be a _____ church with a _____.
- 2) Measure against the scope of _____.

Common Threads:

- | | |
|---------------------------|------------------|
| 1) Clear _____. | Self-Assessment: |
| 2) _____, _____ strategy. | Self-Assessment: |
| 3) _____ Focused. | Self-Assessment: |



Translating to New Thought:

The Vision: _____ as it is _____.

The Mission: "Love _____. Love _____. Teach others to _____."

Purpose for Small Groups: Inspiring _____.

Purpose of Church: Supporting people in their _____.

Once purpose is clear, you can define the best _____ to fulfill that purpose:

The Spiritual Transformation Engagement Process (S.T.E.P. Model™)

STEP ONE: _____

STEP TWO: _____

STEP THREE: _____

STEP FOUR: _____

STEP FIVE: _____

Reflect: How does/could YOUR church support people in moving to the next step??

Learn More:

Small Group Leadership "Train the Trainer": July 24-27, 2015, Hosted by Unity of Denver, Denver, CO

Engagement Strategy "Leadership Labs": 10 Week Virtual Mastermind, Begins Tuesday, May 12, 2015

Join me at the People's Convention: Thursday, June 11, 2015, 3:30-5:00pm: "Infinite Connections: Growing Your Church with Small Group Ministry"

*For information about ministry consulting and leadership development, contact Mendhi
at 817-296-5817 or email her at mendhi@spiritgroups.org.*