



September 6, 2018

Welcome to
Unity Worldwide Ministries'
Conversations With Unity
Leaders: 1 Unity Updates

Your Core Team

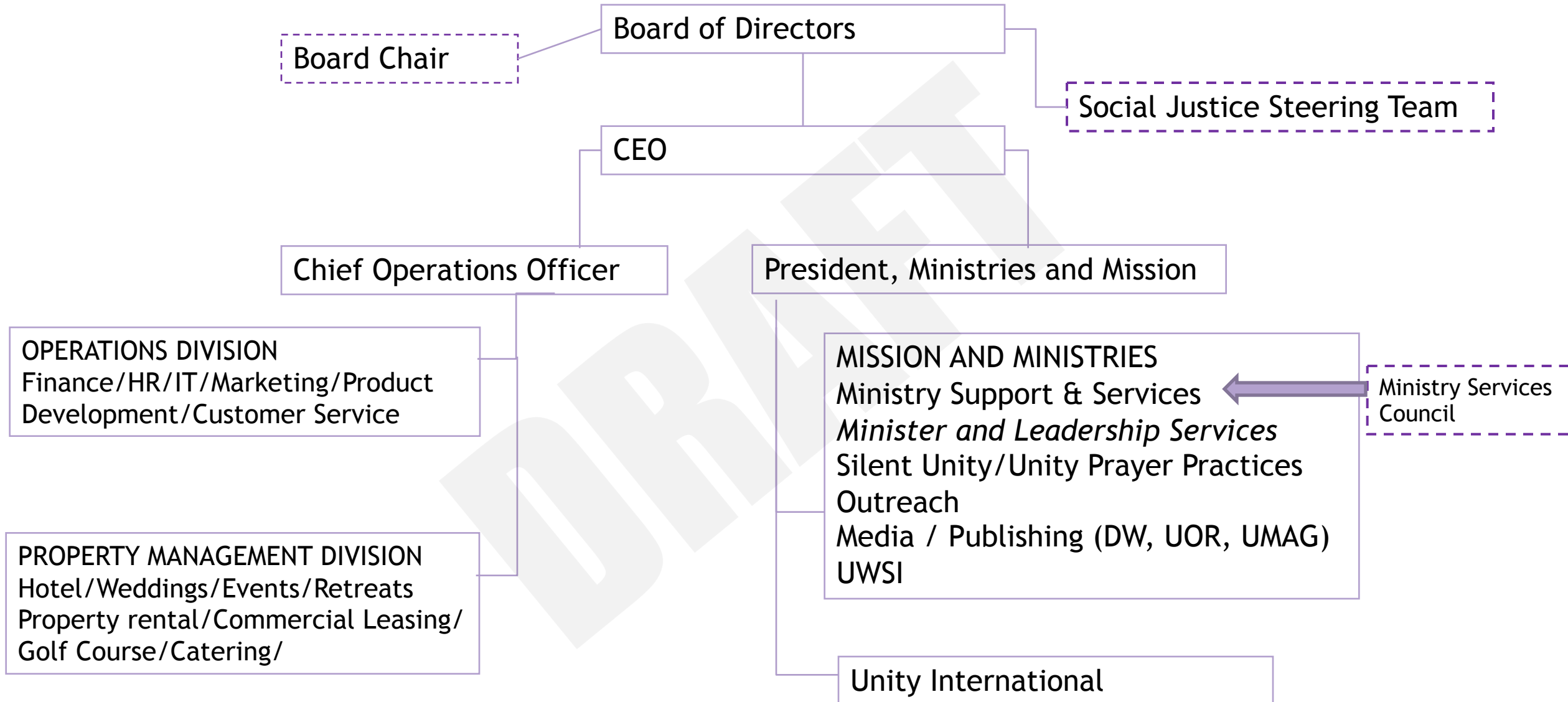
Unity Worldwide Ministries

- **Rev. Donna Johnson**
President & CEO
- **Rev. Bruce Verkruyse**
COO, CFO, VP of Administration & Finance
- **Rev. Richard Bunch**
Board of Trustees Chair Emeritus
- **Rev. Sharon Ketchum**
Board of Trustees Chair

Unity World Headquarters

- **Jim Blake**
CEO
 - **Guy Swanson**
President & COO
 - **Rev. Marilyn Muehlbach**
Board of Directors Chair
 - **Rev.Carolyn Mathlin**
Board of Directors Vice Chair
- **Jennifer Peek, Peek Advisory Group**

1 Unity Combined Overall Structure Draft



Board of Directors Details

13 Member Board

- 10 regular board members
 - 3 elected by Ministry Services Council
 - 7 recruited and selected by LRDT of this Board,
 - (2 of 10 with some International experience/exposure/role)
- At least 5 ministers up to max of 7

Board of Directors Details

- Remaining members = CEO, COO, President Mission & Ministries (add CFO if necessary)
- Chair is Elected by board members (5-year term)
- Strategy and Policy Board (i.e. no operational responsibility)
- The Board of Trustees is responsible for hiring the CEO, fiduciary oversight, providing strategic input, approving strategic plans and annual financial targets

Board Chair Details

- Position elected by Board of Directors serves minimum of 5 year term
- Position includes annual stipend for travel and service
- Serves as an equal spokesperson (to the CEO) for the organization
- In collaboration with the CEO, travels, meets with donors, potential strategic partners, serves as a representative at regional and national conferences, etc.

Social Justice Steering team

- Today's world requires an organizational focus on issues of social justice.
- Team is appointed by and reports to Board
- Team required to submit annual strategic plan

Ministry Services Council

- Could function much like the UWM Board of today
- Could be elected by the field OR could be the regional leads
- Provides input from the field ministries as to the annual priorities of this division and newly needed services, strategic trajectory, etc.
- Supplied by a combination of Regions and the affiliate body

Minister and Leadership Services

- New function dedicated to the well-being and long-term connection to ministers and leaders in service.
- Focused on minister and leader-centric services and benefits i.e. annual leadership summit dedicated to ministers and leaders focused on trends and evolution in ministry leadership, annual gathering for all leaders, in service, at large or other, etc.

Your thoughts, comments and feedback are important to use. Use coreteam@unity.org to connect with us.

